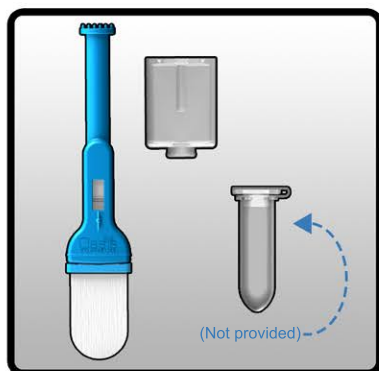


VERSI•SAL® SALIVA COLLECTION DEVICE, CATALOG # VSAL-401

INSTRUCTIONS FOR SALIVA COLLECTION USING THE VERSI•SAL® SALIVA COLLECTION DEVICE FOR RESEARCH OR FORENSIC USE ONLY

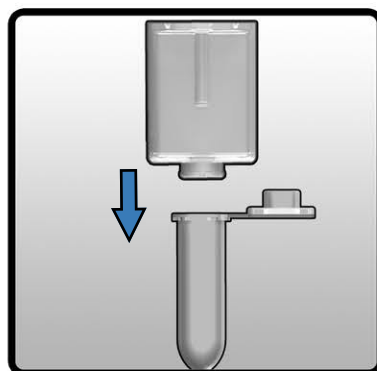
1. Do not eat, drink, smoke, or use oral hygiene products for at least 10 minutes before you start the collection process.
2. Rinse the mouth with water and discard. Please wait at least 5 minutes after this rinse to start the collection procedure.
3. Prior to sample collection ask subject/donor to “pool” saliva in his/her mouth.
4. In order to facilitate faster sample collection, remove the device from the mouth occasionally (every 30 seconds), if required and “pool” saliva once again.

1.



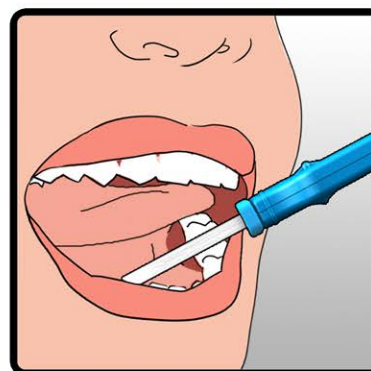
In preparation for Oral Fluid collection place contents on a clean and dry surface away from any potential hazards which might contaminate the sample.

2.



Attach a standard 2 mL graduated Eppendorf Tube (available as an optional component, Catalog Number EPDF-201) to the outlet of the Compression Tube provided.

3.



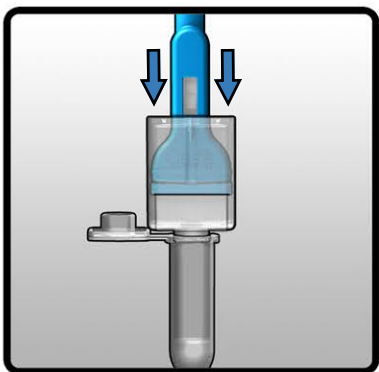
Take the Versi•SAL® device by the handle and place the Absorbent Pad under the tongue to collect saliva. Sample collection may take as long as 1-3 minutes.

4.



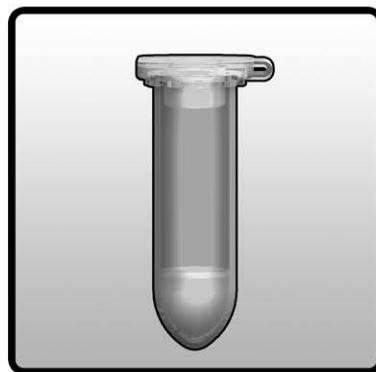
Periodically (every 30 seconds) remove the device from the mouth and view the Sample Volume Adequacy Indicator. When the visible line is no longer in the viewing window collection is complete.

5.



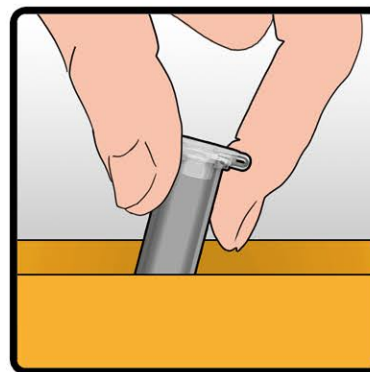
Holding the VERSI•SAL® in an up-right vertical position, push the Versi•SAL® device down into the Compression Tube with your other hand. Continue compression until saliva has stopped flowing from the Absorbent Pad.

6.



Saliva will flow from the Absorbent Pad into the Eppendorf Tube. Once no more compression is possible allow 30 additional seconds for sample to drain into the Eppendorf Tube. Remove the Tube and seal Cap firmly.

7.



Follow validation protocols for analysing the specimen obtained. If the sample is to be analyzed remotely, place the sealed Eppendorf tube into a suitable transport container.

8.



The sample is now ready for transportation to the laboratory.